

# The Great ESCAPE

An Island Adventure

www.thegreatescape.co.nz

# Island Challenge



The Great Escape Island Challenge gives your team an adventure you will never forget as you set off in vehicles to complete a range of fun challenges that have been designed to experience the best sights, scenery and activities Waiheke Island has to offer.

Most challenges require photographic evidence and if completed successfully, score the team points. The event is concluded with an entertaining slide show of photos taken during your adventure and prize giving for the winning team.

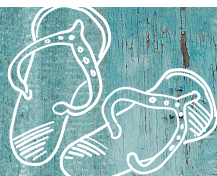
Recommended for	No of People	Duration	Team Size	Suitability
Corporate Groups, Team events, Christmas Parties	Minimum 10, maximum 200	Minimum 2 hours, maximum 4 hours (plus a 20 minute prize giving)	Teams of 6 - 8 recommended	All age ranges and physical abilities

## Notes/Options

Event can start at Waiheke ferry terminal or your choice of venue (e.g. meeting room) • The slide show & prize giving can take place at your choice of venue (e.g. conference venue, vineyard restaurant, accommodation etc.) • The event can be held no matter the weather • Challenges can be themed (i.e. conference theme, Xmas, company values etc.) • The slide show prize giving makes for great entertainment during your lunch or dinner function (a minimum 1 hour between ending the event and the prize giving is required to score teams and formulate the slide show) • A fully licensed driver is required per team (or we can arrange personal drivers \*) • We use late model automatic vans with seating capacity of 8 passengers • WOW factor challenges such as archery, wine & beer tasting, segway games, ziplining, barefoot bowls, SUP & kayaking etc. can be included \* • Gourmet packed lunches and snack boxes can be provided in chilly bins \* *Extra costs apply.*

Price	Price Inclusions	Price Exclusions	Packages
70+ \$60 pp 50 to 69 \$65 pp 30 to 49 \$70 pp 20 to 29 \$75 pp 10 to 19 \$85 pp  <i>Ask about our discounted rates for larger groups and weekday bookings during summer.</i>	<ul style="list-style-type: none"> <li>Design &amp; co-ordination of event.</li> <li>All resources, maps, equipment etc</li> <li>Use of digital cameras &amp; van hire.</li> <li>Prize giving &amp; slide show plus all AV &amp; slide show equipment.</li> <li>Prizes for each member of winning team.</li> <li>Copy of photos on a USB flash drive.</li> </ul>	<ul style="list-style-type: none"> <li>Prices exclude GST.</li> <li>Ferry tickets, transfers, food &amp; beverage costs are extra.</li> <li>Buy Down of insurance and pick up collection of vans (if required).</li> </ul>	We have a range of all inclusive packages or can design a package to suit your requirements including ferry tickets, transfers, meals and accommodation.

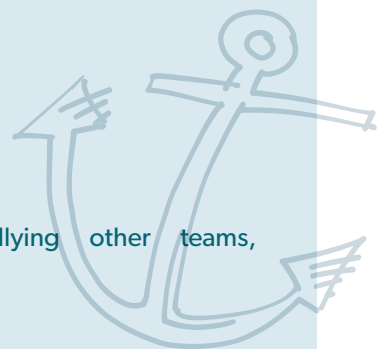




## EXAMPLE OF THE GREAT ESCAPE ISLAND CHALLENGE

Following is a list of **team challenges** that can earn you points. Choose to complete as many as you like and in any order. The more you complete, the more points you earn. Have fun, plan, strategise, be creative and work together to win **The Great Escape**.

Rules	Tips
<ol style="list-style-type: none"> <li>1. You have approximately [hours] to complete as many team challenges as you can.</li> <li>2. <b>Challenges can be completed in any order;</b> however the first 8 challenges are <b>compulsory</b>.</li> <li>3. Your entire team must check-in with the event co-ordinator by [time] at the latest.</li> </ol>	<ol style="list-style-type: none"> <li>1. The more challenges you complete the more points you earn.</li> <li>2. Use the lollies in your pack for bribery purposes (the locals don't bite, in fact they can be very helpful!)</li> <li>3. Earn bonus points for: <ul style="list-style-type: none"> <li>• Most creative/funniest photos</li> <li>• Displaying a team spirit</li> </ul> </li> <li>4. Points can be deducted for: <ul style="list-style-type: none"> <li>• Cheating, torturing, blackmailing or bullying other teams, (unless you can get away with it!)</li> <li>• Not having heaps of fun</li> <li>• Destruction or damage to your company name or reputation</li> <li>• Destruction or damage to any part of the fragile Waiheke environment.</li> </ul> </li> </ol> <p><i>Final scores, photos and prize giving will be revealed at your lunch/dinner function.</i></p>



Example Challenges	Example Itinerary - Afternoon/Dinner
<ol style="list-style-type: none"> <li>1. Everyone loves a sandcastle making competition! Build a sandcastle representing your company on one of Waiheke's beaches using only "natural products" found on the beach. Photograph your masterpiece with your entire team present. Bonus points per buried team member. <i>Points: 50 – Best sandcastle.</i></li> <li>2. Find a person in your team who likes to 'dress up' and let your imagination run wild. Support our local charities by using the money in your pack, to 'dress up' a team member with clothing items purchased from any op shop. Person must stay 'dressed up' until the end of the challenges. Grab a photo of your outrageous team member posing outside the shop. <i>Points: 50 – Best dress up.</i></li> <li>3. Waiheke is well known for its unique art and sculptures. Find any original work of art by a local artist and create your own "Work of Art" using your entire team as the only resource. Take a photo with the original work of art clearly in sight. <i>Points: 50 – Best work of art.</i></li> <li>4. Catch a snapshot of a team member kissing a person in a uniform. Kissing a picture, statue or anything other than a real life uniformed person scores 0 points. <i>Points: 50 – Best kiss.</i></li> </ol>	<p><b>9:45am:</b> The Great Escape Briefing at Waiheke ferry terminal or meeting room/ accommodation.</p> <p>Allocation of resources, cameras, challenges, etc.</p> <p><b>10:00am:</b> The Great Escape begins.</p> <p><b>12:30pm:</b> The Great Escape ends at your lunch venue.</p> <p><b>12 noon:</b> Lunch.</p> <p><b>2:30pm:</b> Prize giving and slide show (allow 20 minutes).</p>

"Our Team had a wonderful time – how do we top it next year I wonder? I have had amazing feedback on how wonderful you were to deal with; the Great Escape Island Challenge

was supremely organised and well executed. The lunches were delicious and the prize giving/slide show presentation – priceless. Thanks for a fantastic day."

Renee Mutimer, WESTPAC INSTITUTIONAL BANK